

# THE PULSE

Quarterly News Letter

Volume 1, Issue 14

April /May/June 2013

CHRYSLER GROUP LLC  
**EMPLOYEE ADVANTAGE PROGRAM**



## Our Mission

Our mission is to ensure Chrysler employees, retirees, and surviving spouses are aware of the Employee Advantage program benefit and the significance of sharing it with friends, and family members. Sharing this benefit will help increase sales, product awareness, and strengthen Chrysler's position in the marketplace.

## What's New?

### The 2014 Jeep Grand Cherokee

If you would like to view a video of the 2014 Jeep Grand Cherokee, click on the link below:

[http://videos.chrysleracademy.com/VehicleVideo.aspx?brand=jeep&vFamily=2014-Grand-Cherokee&video=2014 Jeep Grand Cherokee v3.mp4](http://videos.chrysleracademy.com/VehicleVideo.aspx?brand=jeep&vFamily=2014-Grand-Cherokee&video=2014%20Jeep%20Grand%20Cherokee%20v3.mp4)

Visit [www.ea.chrysler.com](http://www.ea.chrysler.com) for a complete video lineup.

Do you need to reach us? Account specialists are available:

**Monday – Friday, 8:00 a.m. – 4:30 p.m.**

**Eastern Standard Time**

**1-800-756-2886**

**or contact us via email:**

[eaprogs@chrysler.com](mailto:eaprogs@chrysler.com)

## Featured Vehicle

### 2014 Jeep Grand Cherokee Summit



2014 Jeep® Grand Cherokee Summit shown in Deep Cherry Red Crystal Pearl.



Wireless charging pad

## INSIDE THIS ISSUE

1. What's New, Featured Vehicle
2. Important Links, Dealer Locator, Important Numbers, Featured Vehicle continued
3. Protect Your Personal Information, 2013 Travel Tips, Quote Section
4. E. A Driveway, E.A. Brainteaser
5. Observances, Brainteaser Answers

# IMPORTANT LINKS

[www.chryslerretirees.com](http://www.chryslerretirees.com)

(Retiree website)

[www.ea.chrysler.com](http://www.ea.chrysler.com)

(Employee Advantage Program)

[eaprogs@chrysler.com](mailto:eaprogs@chrysler.com)

(Employee Advantage Mailbox)

[www.mopar.com](http://www.mopar.com)

## Dealer Locator

Click on the link below to locate a dealer in your area:

<http://www.chrysler.com/hostc/fiveStar/fiveStarDealers.do>

## IMPORTANT NUMBERS



**Ally Auto Finance** 1-800-200-4622

**Benefits Express** 1-888-456-7800  
(Active Employees)

**Benefits Express** 1-888-409-3300  
(Retirees)

**Employee Advantage** 1-800-756-2886

**Mopar Parts** 1-800-852-6672

**Program Headquarters** 1-800-227-0757  
(Rebates/Incentives)

**Warranty/Service Contracts** 1-800-521-9922



Go wide-screen with this massive CommandView® dual-pane sunroof that includes a dual paned, sliding glass ceiling and power sunshade.



The new ParkView® Rear Back Up Camera\* with ParkSense® Rear Park Assist System displays a rearview video image with dynamic distance grid lines when in reverse.



Bright silver strakes in the rear cargo area help you slide your large gear in and keep items from sliding around.

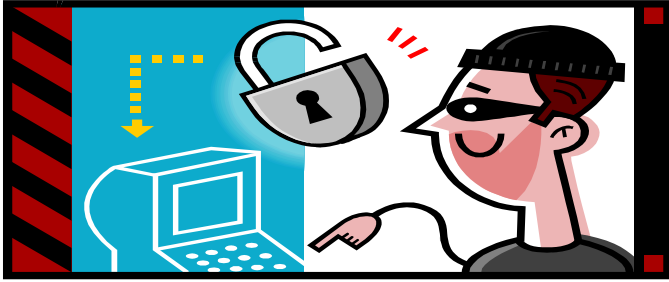


The real wood and leather-wrapped heated steering wheel has fingertip control to control the 7-inch multiview instrument cluster display and available Wi-Fi functions.

For additional information visit:

[www.jeep.com](http://www.jeep.com)

## Protect your personal Information!



Enhancements to the Employee Advantage phone system and website were made to safeguard your personal information. In addition, an audit process was implemented which requires Employees, Retirees, and Surviving Spouses to register each buyer prior to generating a control number.

Your cooperation is also important in protecting your personal information from being compromised. Never share your personal information with anyone. Once this information is shared with others, your account can be accessed at any time, without your knowledge.

If a control number is needed for a friend or family member, please remember to generate the number yourself.

If you find any account discrepancies or control number(s) generated without your authorization, please contact the Employee Advantage department immediately:

**1-800-756-2886**

**or**

**[eaprogs@chrysler.com](mailto:eaprogs@chrysler.com)**

## Quote Section



If you don't like something, change it. If you can't change it, change your attitude.

**Maya Angelou**

## 2013 Top Travel Tips



If you are planning a vacation soon, here are a few tips to make your trip a smooth one.

1. **Passport** – Make sure you have a valid passport and required permit. Fill in your emergency contact number on the back page of your passport. Before you travel make sure to also leave a copy of your travel itinerary and contact information with your family and friends.

For information on how to apply for or renew a passport, click on the icon below.



2. **List** – Have a list of things to do before you travel, for example inform your bank at your home country about your overseas trip. Make a list of what to pack to ensure you pack appropriately, especially during winter and summer season. Also make sure you don't have banned items like scissors or liquids in your carry-on bags or jackets. Put a change of clothes in your carry-on bag in case your luggage is delayed.
3. **Homework** – Learn about the culture and people. Read about the country, and the dos and don'ts of the area you are visiting. Learn the customs, local practices, and the current currency conversion rate. Update your vaccination requirements and make sure your medical insurance covers you overseas. Medical travel insurance is a must when traveling overseas.
4. **Budget** – Have an estimate of how much your trip will cost from airfare tickets, hotel (number of nights/days, star rating,) airport fees, and tourist attraction center's. Establishing a budget will give you an idea of the type of vacation experience you can afford.
5. **Check In** – Checking in online will save you a lot of time once you arrive at the airport. Do arrive at the airport early. It is better to arrive early than late and risk missing your flight.



# E.A. Driveway

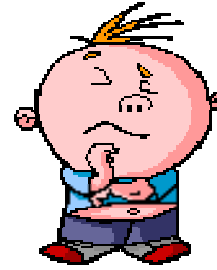


## Spring Maintenance Checklist for Your Vehicle

Spring is the perfect time to do some routine after-winter maintenance on you vehicle. Performing the proper upkeep can keep you safe. Below is a check list to use as a guideline for your cars care.

- Check your antifreeze - Springtime is usually when you need your antifreeze flushed. There are likely to still be frosty mornings, so be sure your antifreeze mixture is good to go.
- Inspect your tires - It's a good idea to inspect your tires, especially after harsh winter weather. Rotating them seasonally will extend their life. Also, air pressure goes down from the cold, so check your tire pressure and add air if necessary.
- Wiper Blades – These take quite a beating from the snow. Now is a great the time to replace your wipers. You want to be ready for the heavy rainfall this spring.
- Fluids – Your engine works harder in winter driving conditions. Bring your car in to have its fluids topped.
- Battery – Like everything else, your battery works extra hard in cold weather. This can get drained, so keep your eyes opened for dimmed headlights or interior lights that imply a weak battery.
- Test the A/C – Turn your air conditioner on full blast and make sure it doesn't have any issues. If you notice the air not getting cold fast, bring your car in to have you're A/C checked.

# E.A. Brainteaser



## 2014 Jeep Grand Cherokee Summit

|   |   |   |   |   |   |   |   |   |   |   |   |   |   |   |   |   |   |   |
|---|---|---|---|---|---|---|---|---|---|---|---|---|---|---|---|---|---|---|
| D | U | A | L | P | A | N | E | S | U | N | R | O | O | F | P | H | E | P |
| A | R | S | P | E | U | L | E | I | E | G | C | A | G | E | E | T | R | P |
| P | A | O | R | N | E | E | S | N | A | N | R | A | T | K | S | O | E | O |
| G | E | G | E | A | E | I | T | A | L | U | O | T | G | S | U | H | A | E |
| N | L | I | N | O | E | A | N | R | I | I | E | A | A | A | O | B | R | D |
| I | U | E | T | C | O | C | E | I | N | L | W | A | E | T | H | M | B | C |
| G | K | P | I | C | O | A | C | P | M | I | H | A | C | N | A | R | A | E |
| R | C | A | C | K | T | S | C | A | U | A | D | A | O | E | I | I | C | T |
| A | I | C | N | D | L | E | A | D | R | C | K | C | L | W | N | R | K | N |
| H | E | S | W | H | S | D | D | D | E | G | T | D | D | O | N | K | U | E |
| C | U | T | R | I | E | A | O | R | N | L | W | E | A | N | P | N | P | G |
| S | P | D | N | E | G | O | O | S | E | G | N | S | C | I | R | E | C | E |
| S | A | R | E | E | P | E | W | T | W | G | K | U | L | R | R | R | A | E |
| E | E | K | O | R | E | H | C | D | N | A | R | G | P | E | E | J | M | T |
| L | E | E | H | W | G | N | I | R | E | E | T | S | D | E | T | A | E | H |
| E | C | G | H | R | E | E | T | P | E | E | A | T | C | A | M | E | R | E |
| R | N | E | C | A | L | P | O | I | E | C | G | T | O | O | S | D | A | M |
| I | R | R | W | S | R | N | X | E | K | T | E | O | K | S | A | E | D | E |
| W | C | K | R | A | R | T | E | R | O | K | E | U | C | R | E | C | E | G |

**Jeep Grand Cherokee  
Wireless Charging Pad  
Dual Pane Sunroof**

**Rear Backup Camera  
Heated Steering Wheel  
Exotic Wood Accents**

# Observances

## May is Melanoma/Skin Cancer Detection and Prevention Month®

More than 3.5 million skin cancers in more than 2 million people are diagnosed in the United States each year. Find out the facts about skin cancer and the preventative measures you can take to protect yourself. For details, click on the icon below



## June is Men's Health Month

The purpose of Men's Health Month is to increase awareness of preventable health problems. Men and boys are encouraged to seek regular medical advice and early treatment for disease and injury. Click on the icon below and print a copy of the health and screening guidelines for men and women provided by the Men's Health Network.



## July 4<sup>th</sup> is Independence Day!

Click on the icons below to view the recipes shown below:



The National Highway Traffic Safety Administration (NHTSA) has created a listing of sober/safe ride programs across the country. To find a ride program in your area, click on the icon below:



Have a safe and happy holiday.

Please remember not to drink and drive.



Employee Advantage Brainteaser Answers  
Volume 1, issue 12, December 2012

RAM 1500 Laramie Longhorn



RAM Laramie Longhorn  
Refined interior  
Best in Class

Seven inch instrument panel  
Active Grille Shutters  
Torqueflite eight

### Sources:

- <http://www.menshealthnetwork.org/library/pdfs/GetItChecked.pdf>
- <http://spoonful.com/recipes/revolutionary-berries>
- <http://spoonful.com/recipes/spangled-sandwich-pops>
- <http://spoonful.com/recipes/banana-split-twist>
- <http://www.aad.org/spot-skin-cancer>
- [http://www.travel.state.gov/passport/passport\\_1738.html](http://www.travel.state.gov/passport/passport_1738.html)
- <http://videos.chrysleracademy.com/VehicleVideo.aspx?brand=jeep&vFamily=2014-Grand-Cherokee&video=2014-jeep.com>
- <http://bothsidesoftheriverautomotive.wordpress.com/2013/04/03/spring-m...>
- <http://ezinearticles.com/?2013-TopTravel-Tips&id=7600960>